

DRIVEN

TO FAIRLY GOVERN CURRICULUM



MEDICAL SCHOOL

UNIVERSITY OF MINNESOTA

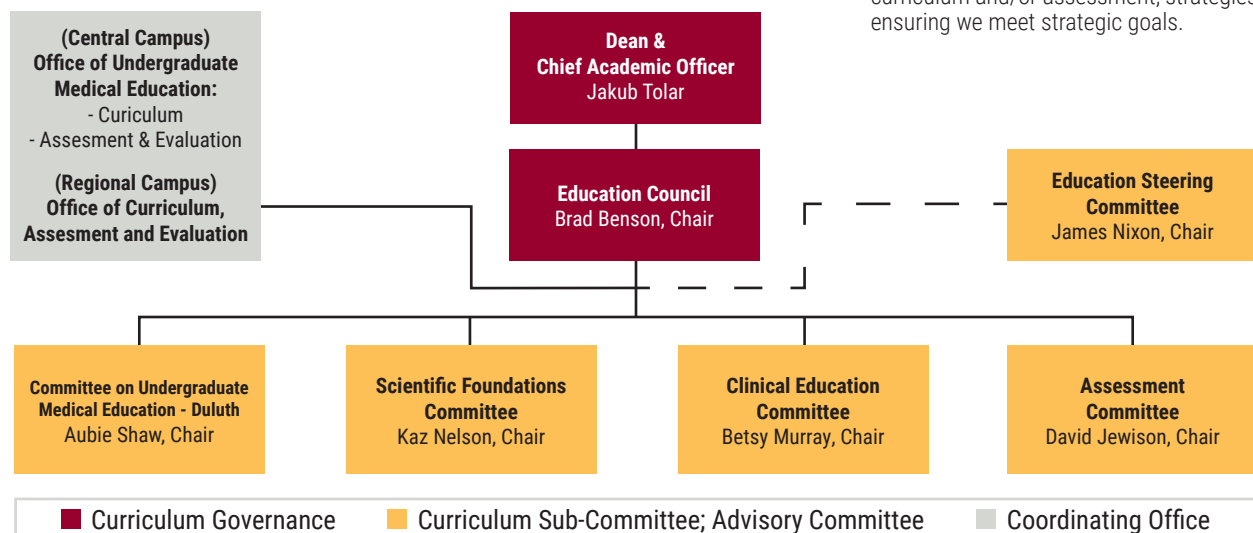
Driven to Discover®

EDUCATION COUNCIL (EC)

The Education Council is the University of Minnesota Medical School's governing committee, overseeing the medical education program. It has the responsibility for and authority over the design, management and evaluation of the curriculum to ensure it is coherent, coordinated and integrated horizontally and vertically across sites and campuses.

The EC has at least 30 voting members, including Medical School and curriculum leaders, faculty members and students from the Twin Cities and Duluth campuses. The EC discusses major educational issues and approves curricular changes based on recommendations from its four curriculum subcommittees, the Education Steering Committee and leadership within the Office of Undergraduate Medical Education.

U OF M MEDICAL SCHOOL CURRICULUM GOVERNANCE COMMITTEE STRUCTURE



Curriculum Subcommittees of the EC—

Committee for Undergraduate Medical Education in Duluth (CUMED) and Scientific Foundations Committee (SFC)
oversees curriculum integration and evaluation for Year 1 and 2 on their respective campus. These committees make recommendations regarding curricular issues to the Education Council. Voting membership of the committees is course directors of the preclerkship courses and Year 1 and 2 students.

Clinical Education Committee (CEC)
oversees curriculum integration and evaluation for clinical clerkships and makes recommendations regarding curricular issues to the Education Council. Voting membership of the committee includes clerkship directors for required clerkships, LIC Directors, an MD/PhD leadership member, additional subspecialty and elective/advanced selective directors, a Duluth campus liaison, and Year 3 and 4 students.

Assessment Committee (AC)
oversees all aspects of assessment in the MD program in order to promote and support best practices in testing and assessment throughout the UME program. Voting membership of the committee includes course and clerkship directors, residents, students, and additional stakeholders in UME.

Education Steering Committee (ESC)
serves as an advisory group to the Education Council, CUMED, CEC, SFC, and Assessment Committee. Issues the committee addresses include emerging curricular challenges at the national level; strategic visioning related to curriculum and/or assessment; strategies for ensuring we meet strategic goals.