

Minutes
University of Minnesota Medical School
Faculty Assembly
May 21, 2008

A meeting of the University of Minnesota Medical School Faculty Assembly was held on Wednesday, May 21, 2008 at 4:30 p.m. in the Mayo Auditorium, via ITV to 165 School of Medicine, Duluth. Dr. Roberta Sonnino, Associate Dean for Faculty Affairs, presided.

Welcome and Updates

Dean Powell welcomed the faculty and made the following award presentations:

- **Stephen Katz**, Associate Professor of Integrative Biology and Physiology, was awarded the University of Minnesota Postbaccalaureate, Graduate and Professional Education Teach Award for 2008.
- **Nelson Rhodus**, who has an adjunct appointment in the Department of Otolaryngology, with a home appointment in the School of Dentistry, was inducted into the Academic Health Center Academy of Excellence in the Scholarship of Teaching and Learning.

The Dean then introduced the faculty to newly appointed staff in the Dean's Office as follows:

- **Lindsey Henson**, Vice Dean for Education
- **Kathleen Brooks**, Associate Dean for Primary Care
- **Roberta Sonnino**, Associate Dean for Faculty Affairs.

Ratification of New Committee Members

Dr. Roberta Sonnino presented the following Twin Cities committee member nominations for ratification by the Faculty Assembly:

Admissions Committee: Richard Bianco, Afshin Divani, Maria Evasovich, Anne Minenko, and Robert Reardon

Promotion and Tenure Committee: Michelle Biros, S.H. Fatemi, Anne Joseph, E. Russell Ritenour, Julie Ross, and Steve Santilli

Committee on Student Scholastic Standing: Sharon Allen, Eric Gross, Stephen Katz, Leon Satran, and Kevin Wickman

Education Council: Anne Minenko

Research Council: Esam El-Fakahany, James McCarthy, and Toni Moran

Education Council Report:

Dr. Kathleen Watson, Associate Dean for Students and Student Learning, presented the Education Council Report (see attached report).

Admissions Committee Report (Duluth)

Dr. Lillian Repesh, Associate Dean for Student Affairs and Admissions (Duluth Campus), presented the Duluth Admissions Committee Report (see attached report).

Admissions Committee Report (Twin Cities)

Dr. Paul White, Assistant Dean for Admissions (Twin Cities), presented the Twin Cities Admissions Committee Report (see attached report).

Scholastic Standing Committee (Duluth)

Dr. Richard Hoffman, Associate Dean for Medical Education and Curriculum (Duluth) presented the Duluth Scholastic Standing Committee Report (see attached report).

Committee on Student Scholastic Standing Report (Twin Cities)

Dr. Michael Mauer, Chair of the Committee on Student Scholastic Standing (Twin Cities) presented the Committee on Student Scholastic Standing Report (see attached report).

The meeting was adjourned at 5:25 p.m.

Respectfully submitted,

Jeni Skar
Secretary to the Faculty Assembly

Education Council Report to the Faculty Assembly

Kathleen Watson, MD
Associate Dean for Students and
Student Learning

UNIVERSITY OF MINNESOTA

Medical School

Oversight and Accomplishments 2007-2008

- Admissions
- Match
- Curriculum Committee
- Evaluation
- LCME
- MED 2010
- Endorsed new *Teaching Track*
- Primary care task force

Minnesota's Future Doctors

Jo Peterson, PhD



***Recruited
students:***

2007:

- 23 summer + program
- 25 less intensive

2008

- 27 summer + program
- 25 less intensive

Residency Match 2005-2008

UNIVERSITY OF MINNESOTA

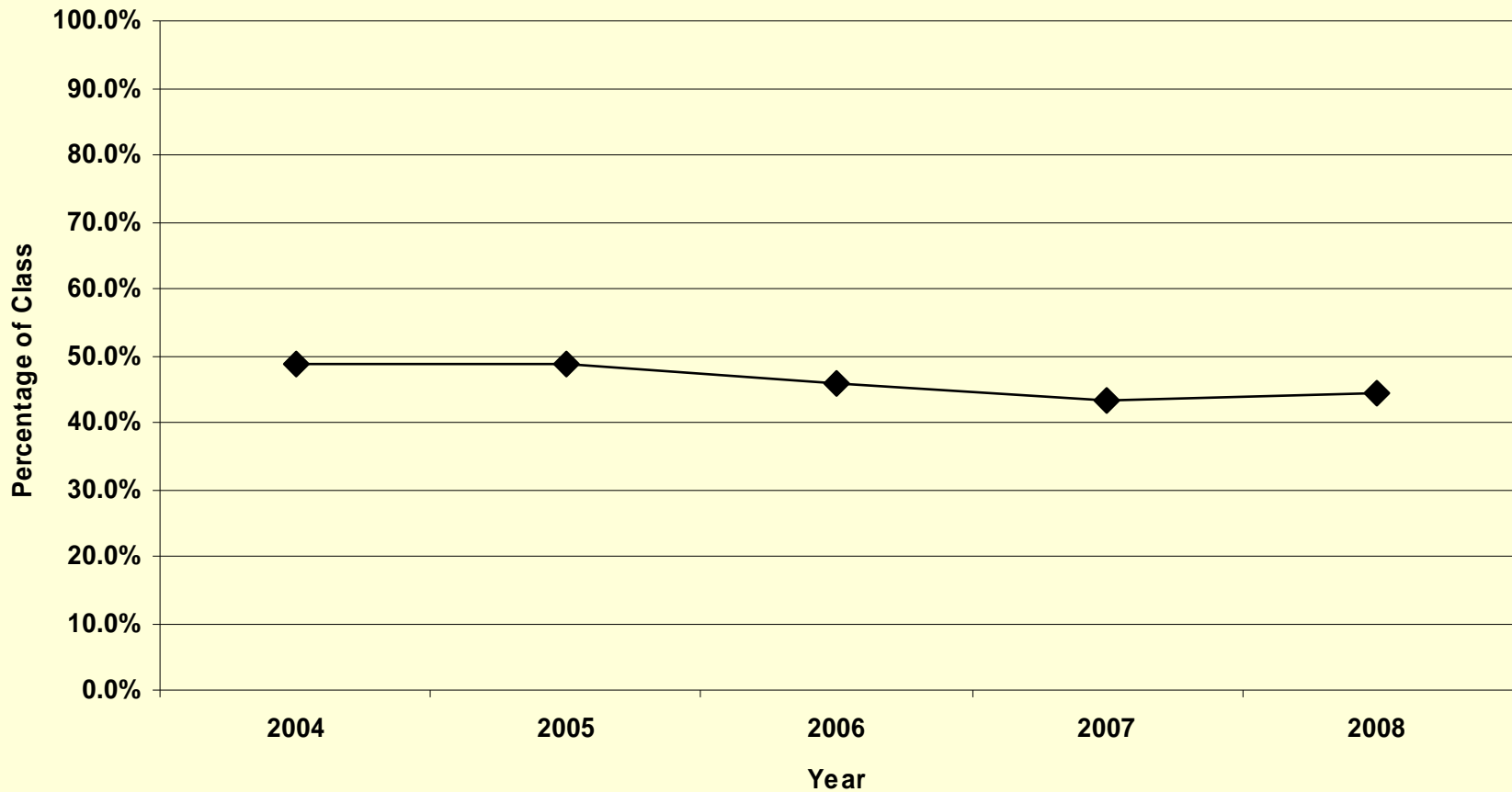
Medical School

University of Minnesota Medical School

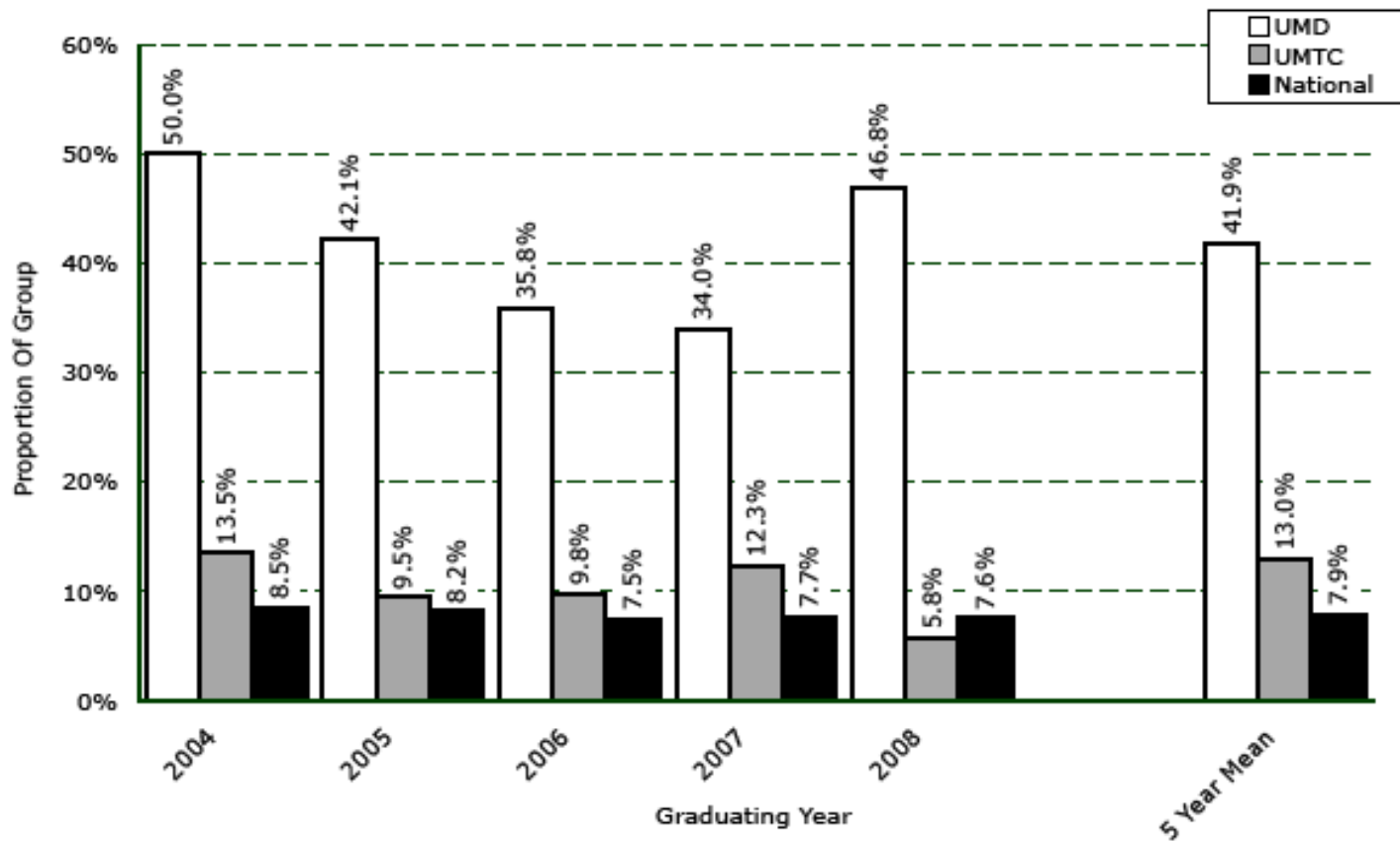
Match 2008

	2005	2006	2007	2008
Internal Medicine	22.4%	17.8%	15.6%	18.7%
Family Practice	17.9%	15.6%	17.3%	14.8%
Pediatrics	6.3%	8.4%	5.8%	8.1%
Emergency Medicine	7.2%	7.6%	8.4%	7.2%
Surgery	6.3%	6.2%	4.4%	6.7%
Radiology	3.6%	4.0%	4.0%	4.8%
Orthopedic Surgery	4.0%	2.7%	4.4%	4.3%
Obstetrics & Gynecology	5.4%	4.4%	4.9%	3.8%
Anesthesiology	4.0%	6.2%	3.6%	2.9%
Medicine/Pediatrics	2.2%	4.0%	4.4%	2.9%
Otolaryngology	1.3%	0.9%	2.2%	2.9%
Urology	0.4%	2.2%	1.3%	2.9%
Ophthalmology	1.8%	1.8%	2.7%	2.4%
Psychiatry	1.8%	2.7%	1.8%	2.4%
Pathology	3.6%	4.0%	2.2%	1.9%
Dermatology	0.9%	2.2%	2.7%	1.4%
Neurology	2.2%	0.9%	2.2%	1.4%
PM&R	1.3%	0.0%	1.8%	1.4%
Radiology-Oncology	0.4%	0.0%	0.4%	1.4%
Neurological Surgery	0.0%	0.4%	0.4%	1.0%
Child Neurology	0.4%	0.4%	0.0%	0.5%

Percentage of Students Matching into Primary Care 2004-2008

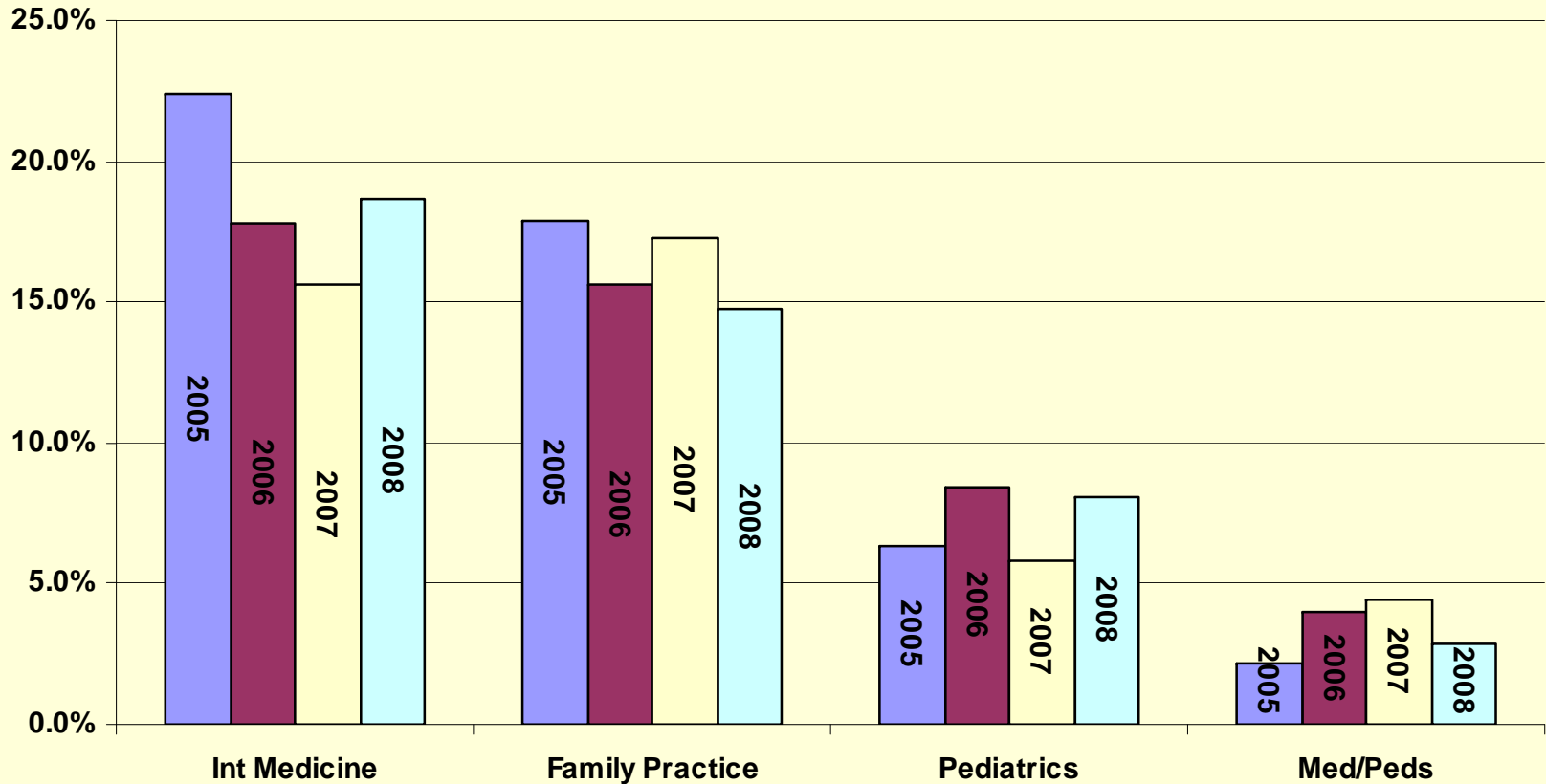


Proportion Of Senior Students Selecting Family Practice In NRMP Match



Primary Care Trends by Specialty

2005-2008



Curriculum Committee Retreat

- **Carol Aschenbrenner, M.D.,**
Executive Vice President at AAMC
- **Consensus Outcomes:** Short term and long term actions:
 - Admissions
 - Faculty Development
 - Student learning
 - Scientific Foundations
 - Intra/inter-campus collaborations

Curriculum Committee Retreat

Short term and long term actions:

- Admissions--Joint AMCAS application
- Faculty Development
- Student learning--Flexible MD
- Scientific Foundations
 - Write competencies to address the LCME standard on clinical and translational research
- Intra/intercampus collaborations
 - Share lectures and digital path slides with Duluth students; learn from each other; exchange ideas; create a structure of sharing

Curriculum Committee Retreat Information sharing:

<https://moodle.umn.edu/course/view.php?id=2005>

For access, contact Sue Mowbray:

smowbray@umn.edu

626-6067

Evaluation

- USMLE results
- Future “Gateway” examination
- Course evaluations
- Program Evaluation:
<http://meded.umn.edu/evaluation/>

Program Evaluation | UMN Medical Education - Windows Internet Explorer

http://www.meded.umn.edu/evaluation/reports.php

Return to: [Medical Education](#) : [Medical School](#) : [Academic Health Center](#) : [U of M Home](#)

UNIVERSITY OF MINNESOTA [MvU](#) | [One Stop](#) | [Directories](#) | [Search U of M](#)

Program Evaluation

Medical Education

What's Inside

- [Home](#)
- [Projects](#)
- [Reports](#)**
- [Student Resources](#)
- [Subcommittee](#)
- [Upcoming Events](#)

Program Evaluation

Julia Wynn, M.A.
Evaluation Specialist
(612) 625-4489
wynn0030@umn.edu

Office Location:
B-610 Mayo Building


Mailing Address:
Curriculum & Evaluation
Office of Education
University of Minnesota
Medical School
Mayo Mail Code #293
420 Delaware St. S.E.
Minneapolis, MN 55445

MedEd Home

Search MedEd

Reports

The **Office of Education**, for University of Minnesota Medical School, collects a variety of programmatic data; including individual course/clerkship performance, learner outcomes and achievement, and the overall success of the medical education program. A collection of an assortment of data via a range of sources and methods is essential for creating a landscape narrative of the entire program. One attempt to communicate this visual to faculty, students and administrators involved in the education process is through an **Annual State of Curriculum Report**. This annual report, which will be made available at the beginning of fall each academic year, consists of universal quantitative and qualitative analysis of distinct components of our program, for both Twin Cities and Duluth campuses.



The table below includes descriptions of the sections of the annual report. You may access this report information by logging in below.

[Faculty login](#) [Student login](#)

All reports require login with your University Internet ID (x.500)
If you do not have access, email wynn0030@umn.edu

Annual State of Curriculum Report

Report/Data	Purpose/Objective	Respondents/Participants	Collection Source	Collection Period

Reports

- [2007](#)
- [2008](#)
- [2009](#)

For Reports before 2007, email Julia Wynn, M.A., wynn0030@umn.edu

Trusted sites 100%

LCME

- 2/18/08: Letter to Dean
 - Accepted the class size increase
 - Accepted the 12/10/07 report on:
 - functional integration of the Duluth and Twin Cities campuses
 - Medical student diversity on the TC campus
 - Faculty resources at Duluth
 - Instructional support resources
 - Requested report by 1/1/2010
 - Next full survey is scheduled for 2011-2012

Oversight and Accomplishments 2007-2008

- Admissions
- Match
- Curriculum Committee
- Evaluation
- LCME
- **MED 2010**
- **Endorsed new *Teaching Track***
- **Primary care task force**

SAVE THE DATE!

October 14th, 2008

MED 2010 Summit

"After the Match..." - GHHS Humanism Retreat - 3.14.2007

UNIVERSITY
OF MINNESOTA

**Medical School
Duluth**

**Faculty Assembly
Medical School Duluth Admissions
May 21, 2008**

UNIVERSITY OF MINNESOTA

Committee on Admissions Structure

- Members are proposed by the Associate Dean for Admissions and Sr. Associate Dean with confirmation by the School Assembly
- At least one-half of the members are regularly appointed faculty members of the Medical School Duluth (MSD)
- Associate Dean of Admissions is an *ex officio*, non-voting member
- Other members include:
 - UMD graduate and undergraduate faculty
 - Community members (e.g., physicians)
- Fifteen members including 3 prescreeners
- Three-year commitment

Committee on Admissions Members

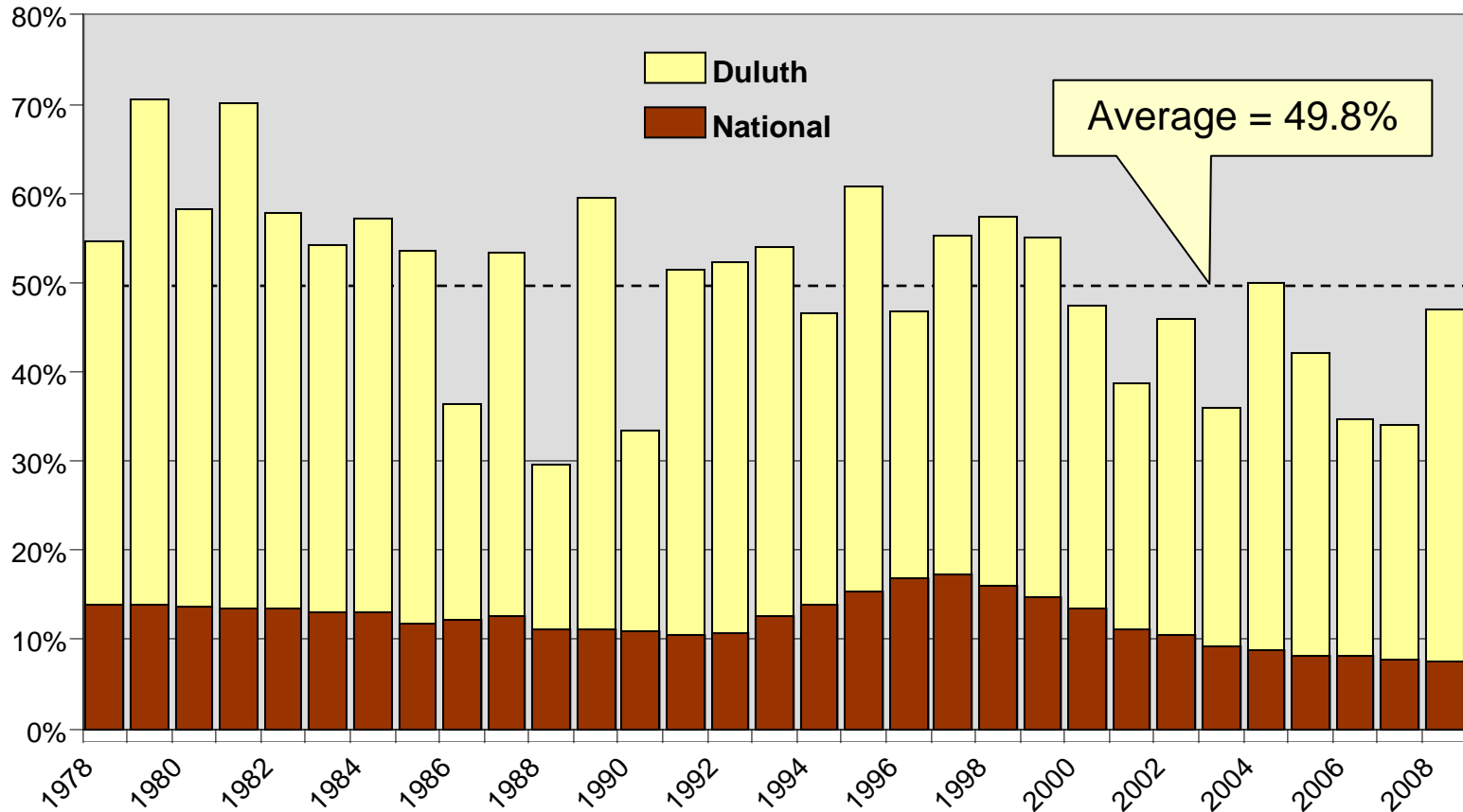
2007-2008

- Jeff Adams, M.D., Medical School Duluth
- James Boulger, Ph.D., Behavioral Sciences (prescreener)
- Jay Butcher, M.D. SMDC
- Ray Christensen, M.D., Medical School Duluth
- Tom Day, M.D., Duluth Family Practice Center
- Stephen Downing, Ph.D., Anatomy, Microbiology and Pathology
- Barb Elliott, Ph.D., Family Medicine and Community Health Duluth
- Janet Fitzakerley, Ph.D., Physiology and Pharmacology
- Donna Forbes, Ph.D., Anatomy, Microbiology and Pathology
- Lois Heller, Ph.D., Physiology and Pharmacology
- Rick Hoffman, Ph.D., Behavioral Sciences (prescreener)
- Mark Nierengarten, Ph.D., Health, Physical Education and Recreation, UMD
- Bonnie Peterson, Family Medicine and Community Health Duluth
- Ed Stauffer, Ph.D., Physiology and Pharmacology (prescreener)
- George Trachte, Ph.D., Physiology and Pharmacology (Chair)
- Anna Wirta, Center for American Indian and Minority Health
- Lillian Repesh, Ph.D., Associate Dean for Admissions and Student Affairs
- Susan Christensen, Executive Secretary

Mission of the Medical School Duluth

- The mission of the University of Minnesota Medical School Duluth is to be a leader in educating physicians dedicated to family medicine, to serve the health care needs of rural Minnesota and American Indian communities, and to discover and disseminate knowledge through research

Proportion Matching in Family Medicine By Graduating Year



Cumulative Percent of Medical School Duluth Graduates by Size of Practice Community

Up to 7,500 **31.0%**

Up to 20,000 **41.8%**

Up to 50,000 **55.4%**

Up to 100,000 **70.6%**



Goals of the Committee on Admissions

- COA assures.....
 - a competitive review of all applicants in the pool and all materials
 - an evaluation of all applicants that is flexible, holistic, and individualized
 - the selection of diverse, highly qualified applicants

Essential and Desired Qualities

- Introduced this year from Dean's Task Force Recommendations
 - commitment to improving the human condition
 - unassailable professional conduct
 - outstanding interpersonal communication skills
 - effective dedication to life-long learning

NEW Prerequisites

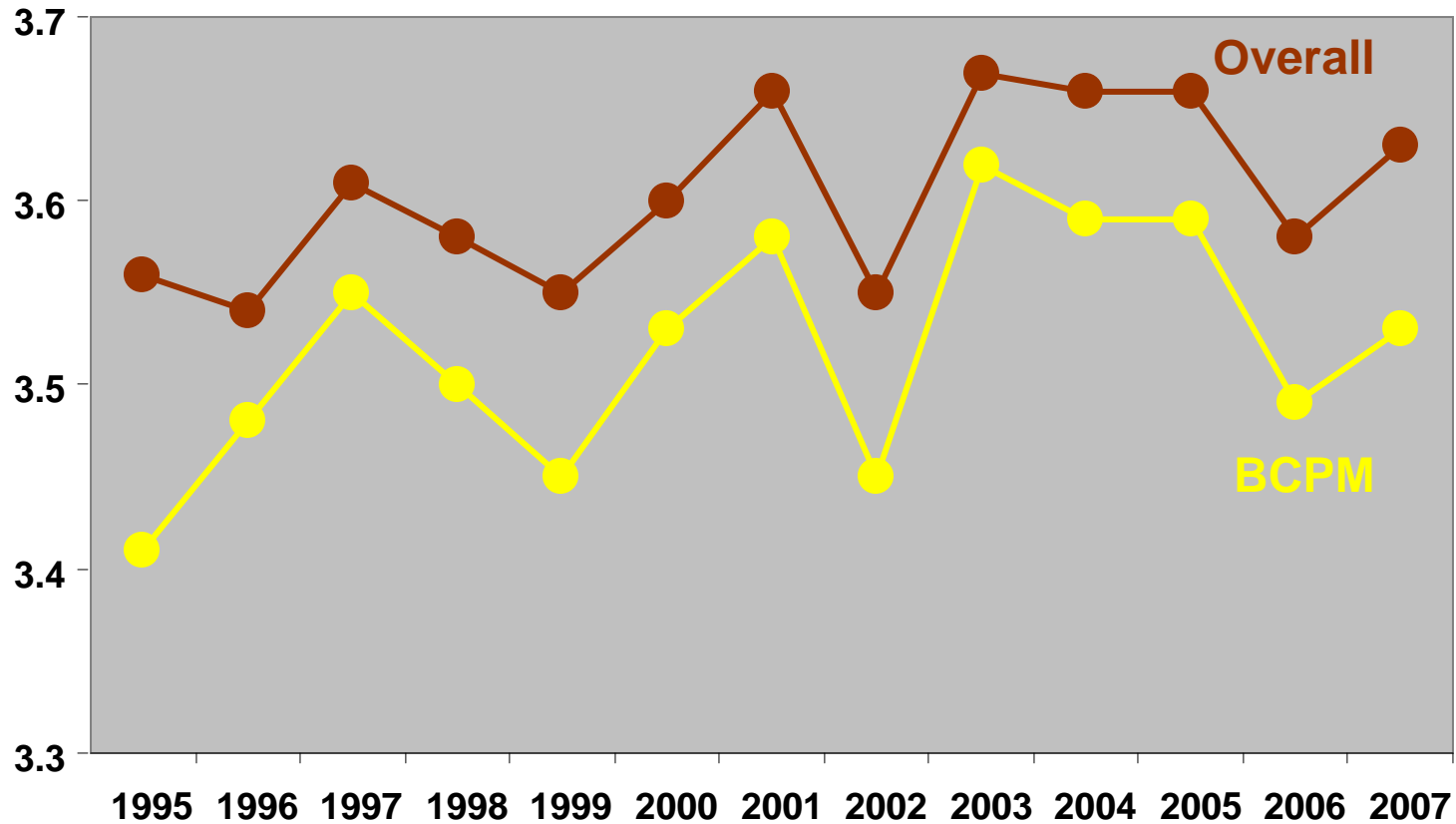
For students matriculating 2009 and beyond

Required Courses	Semesters	Quarters
Biology with lab	1	1
Chemistry with lab	1	1
Additional courses in the life sciences (biology, genetics, zoology, botany, parasitology, etc), biochemistry, chemistry, and /or physics, <u>at least 2 of which must be upper level courses</u>	4	4
1 upper-level course in the humanities or social sciences with an <u>intensive writing requirement</u>	1	1
Total	7	7

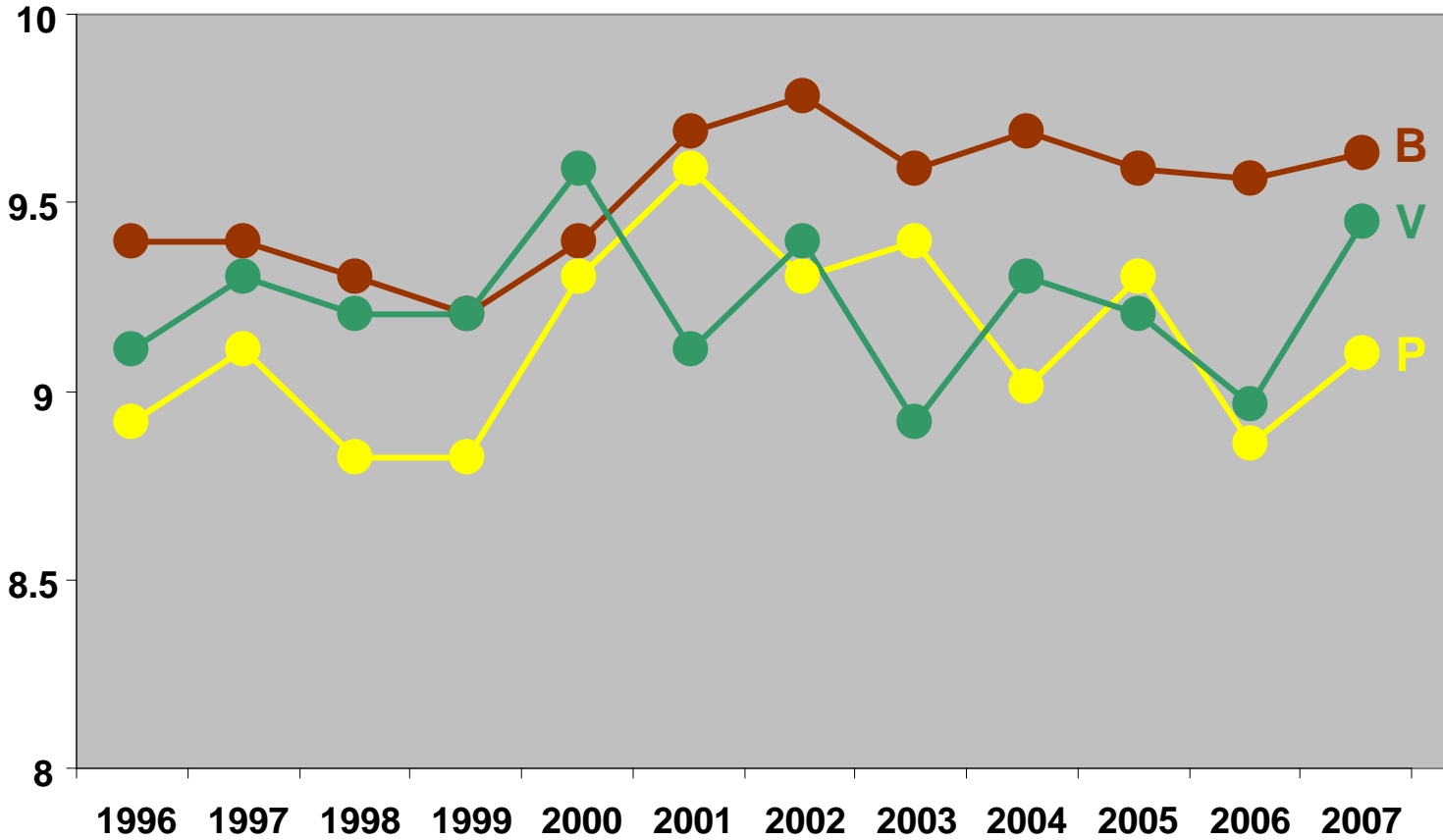
2008 Entering Class Statistics

▪ Total applicants:	1413
▪ Entering students:	60
▪ Residency Status:	
– Minnesota residents	55 (92%)
– Out of state residents	5 (8%)
▪ Gender	
– Females	36 (60%)
– Males	24 (40%)
▪ Multicultural	7 (12%)
– Native Americans	6 (10%)
▪ Number of Interviews	146
▪ Hometowns smaller than 20,000	87%

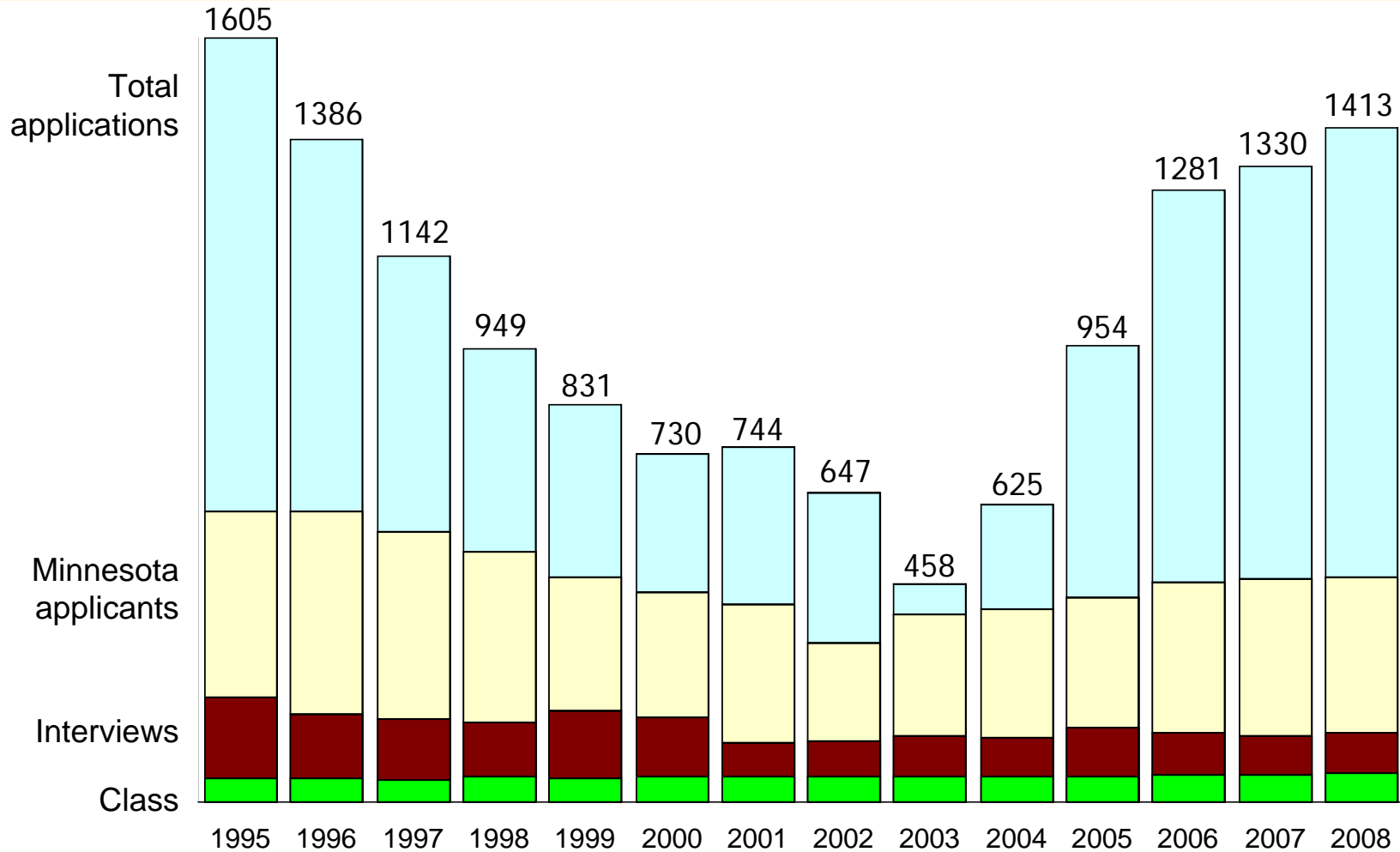
Medical School Duluth Entering Class GPA Averages



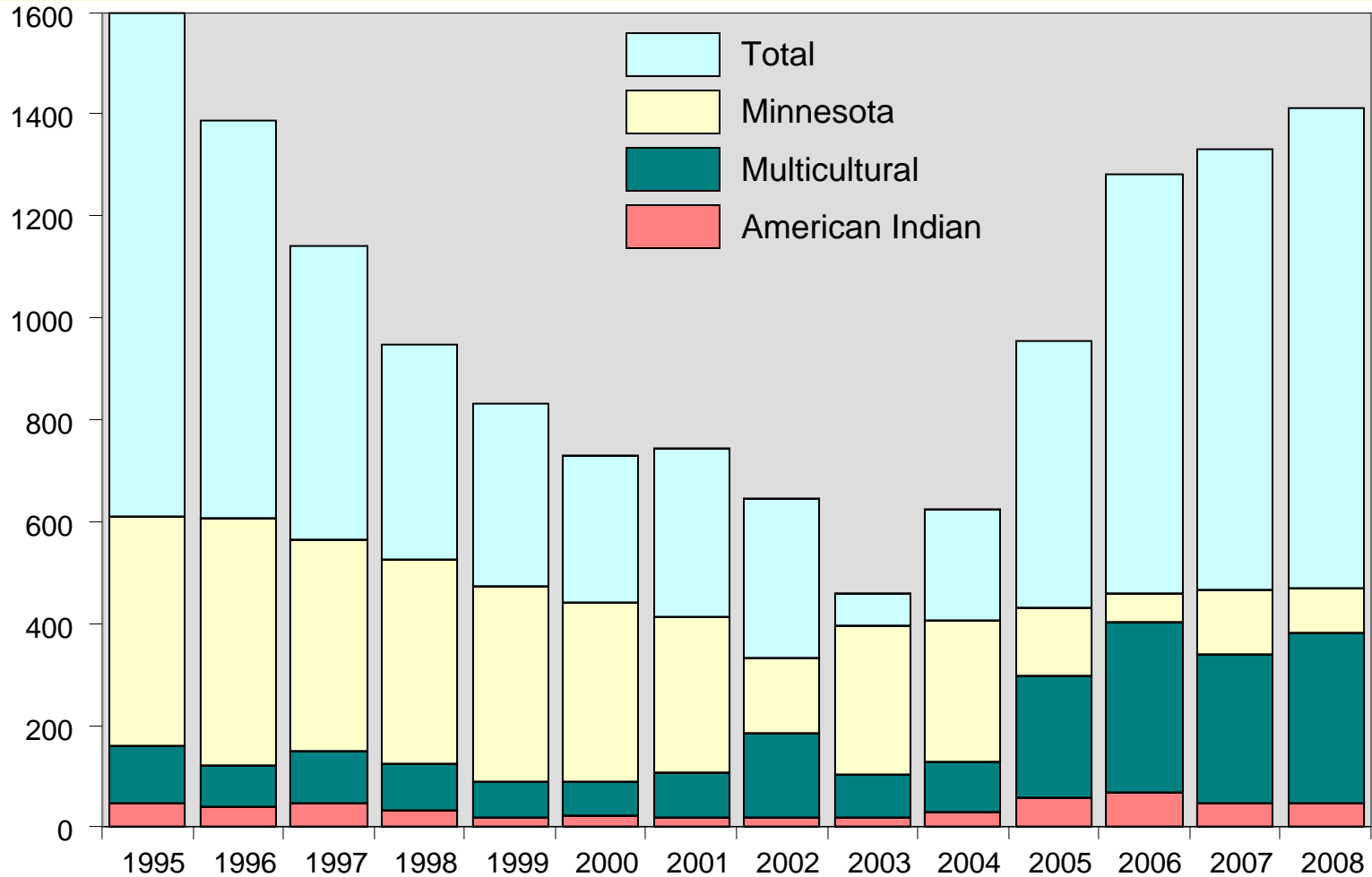
Medical School Duluth Entering Class MCAT Averages



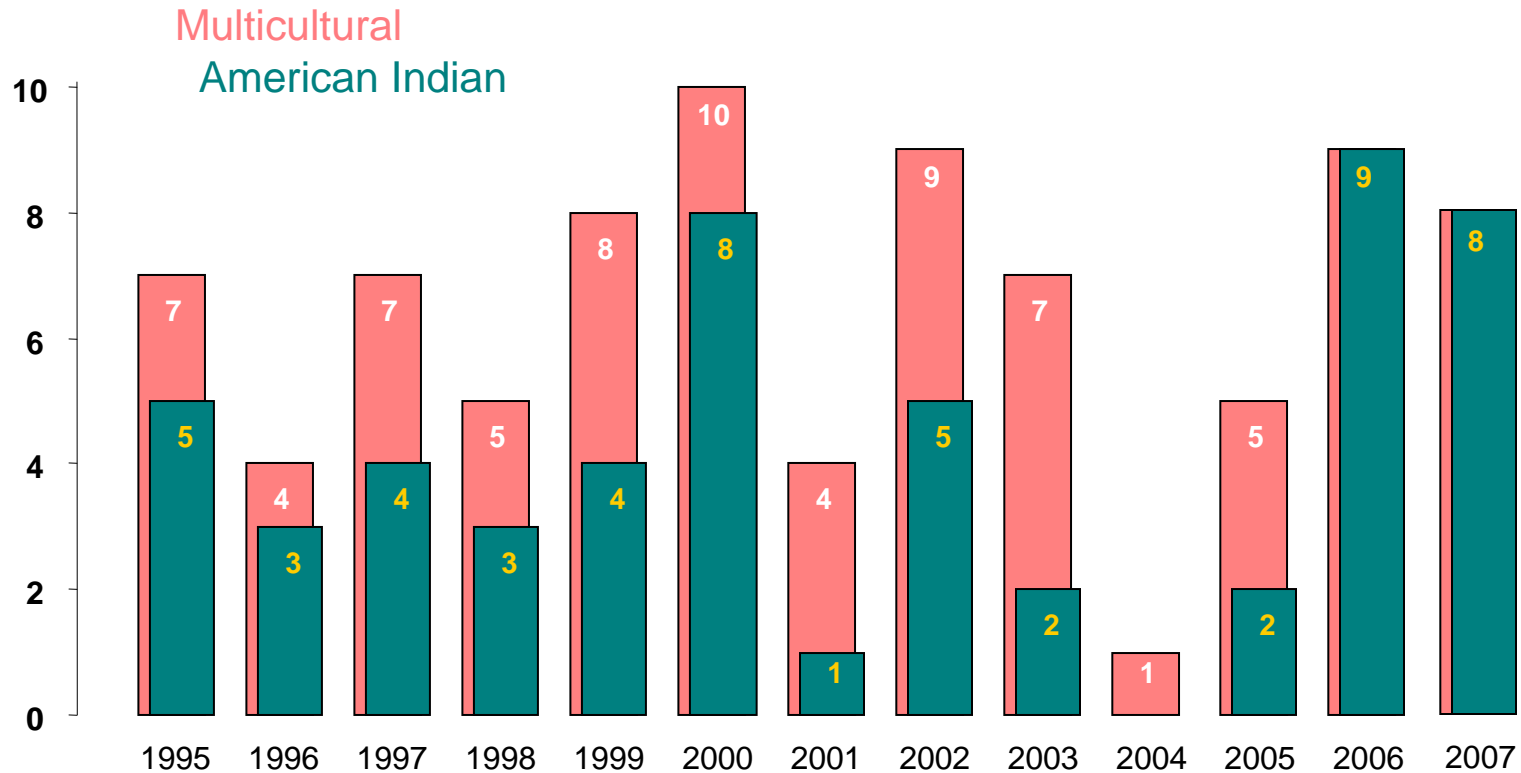
Medical School Duluth Applicants



Medical School Duluth Applicants



Medical School Duluth Matriculants Multicultural and American Indian



University of Minnesota
Medical School Duluth

**Entering Class of 2008
Admissions Statistics
as of May 8, 2008**

Applications

Total applications received	1413
Minnesota applicants	470
Total minority applicants	381
American Indian applicants	46

Interviews

Total interviews	146
Minnesota interviews	123
Multicultural interviews	25
American Indian interviews	16

Entering Class of 2008

Total acceptances offered	73
Early Decision acceptances	3
Early Admission acceptances	5
Deferred from 2007	4
Deferred until 2009	-

Average GPA

BCPM	3.63
Total GPA	3.70

Current acceptances	60
Minnesota residents	55

Average MCATs

Verbal Reasoning	9.09
Physical Sciences	9.34
Biological Sciences	9.75

Multicultural

American Indian	7
Minnesota American Indian	6
	2

Undergraduate Schools (29 schools)

University of Minnesota	21
UM Duluth	12
UM Twin Cities	5
UM Morris	4
Minnesota State Universities	2
Minnesota Private Colleges	19
Other (out of state)	18

Men	32
Women	26

Hometown Size (38 Minnesota counties)

Hometowns smaller than 20,000 = 87%

Rural	Less than 2,500	19	32%
Small town	2,500-7,499	19	32%
Large town	7,500-19,999	14	23%
Small city	20,000-49,999	1	2%
Medium city	50,000-99,999	6	10%
Urban/suburban	100,000 and up	1	2%

Undergraduate Majors (21 majors)

Biology	25
Chemistry	6
Other Science	17
Other Majors	12

Graduate Degrees

M.A., Biology	1
---------------	---

Age

Average	23
Mode	22
Range	21-31

**The Office of Admissions (TC)
Report to the Faculty Assembly
May 21, 2008**

The Admissions Committee

- A standing committee of the Executive Faculty
- Committee composed of:
 - Basic Science and Clinical Faculty
 - Medical Society Representatives
 - Year 4 Medical Students
 - Ex-Officio [non-voting] Members

Admissions Committee Members, 2007-2008

Jasjit Ahluwalia, MD, MPH, MS, Medicine
Walter Bailey, MD, Ramsey Medical Society
G. Eric Bauer, PhD, Genetics, Cell Biology and Development
Kumar Belani, MD, Anesthesiology
Joseph Brocato, PhD, Family Medicine and Community Health
Khalaf Bushara, MD, Neurology
Kent Crossley, MD, Medicine *
David Current, MD, Family Medicine
Lenore Everson, MD, Radiology
William Gamble, MD, Surgery
Ken Guidera, MD, Orthopedic Surgery
David Hamlar, MD, DDS Otolaryngology
A. Stuart Hanson, MD, Hennepin Medical Society
Gerald Hill, MD, Association of American Indian Physicians

David Johnston, MD, MN Medical Association
Sanjiv Kumra, MD, Psychiatry
Barbara Leone, MD, Family Medicine and Community Health
David Levitt, PhD, Physiology
Ji-Chia Liao, MD, Anesthesiology
Steven Miles, MD, Medicine/Bioethics
Heather Nelson, MD, Class of 2008
Arthur L. Ney, MD, Surgery
William D. Payne, MD, Surgery
Claus Pierach, MD, Medicine/History of Medicine
Gerald Rosen, MD, Pediatrics
Leon Satran, MD, Pediatrics *
Christopher Vu, MD, Class of 2008
Karen Wahmanholm, MD, PhD, Psychiatry

* Committee Co-Chairs

Purpose

- To ensure that an applicant can negotiate the curriculum and is academically fit for Medical School.
- To accept those applicants whom the committee has evidence will be competent, caring and successful physicians.

Mission

The Office of Admissions carries out the admissions process in a manner that is equitable, efficient, and timely. Services provided by the Office of Admissions are responsive to the needs of prospective applicants, applicants, undergraduate pre-medical advisors, referring institutions, Medical School faculty and administrators, and external constituents including the Board of Regents, the Minnesota State Legislature and the Association of American Medical Colleges.

Goals

- Maintain the integrity of the admissions process.
- Provide information to applicants in a caring, timely, and confidential manner.
- Admit applicants who exemplify the medical profession's values and standards.
- Enhance the diversity of the Medical School student body.
- Develop innovations to meet the educational mission of the University of Minnesota Medical School.

2007-2008 Goal Strategies

- Partnered with the admissions committee to address system and policy issues
 - Implemented new admissions business process
 - Established new procedures aimed to streamline the application review process
- Increased the number of committee members
- Reduced the number of committee meetings
- Included 4th year students in the interview process
- Developed a strategic communications plan
- Announced new requirements to University (advising) community
- Office of Admissions moved to new office location, G254 Mayo

Outcomes

- Process streamlined for greater efficiency
- More committee members, less meetings, greater efficiency
- Increased focus on quality applicants
- Reduced the number of interviews offered
- Interviews concluded one month earlier than past years
- Improved office space, more welcoming environment improves recruitment efforts
- MS4 participation in interview process enhances recruitment efforts
- The number of multicultural applicants continues to increase

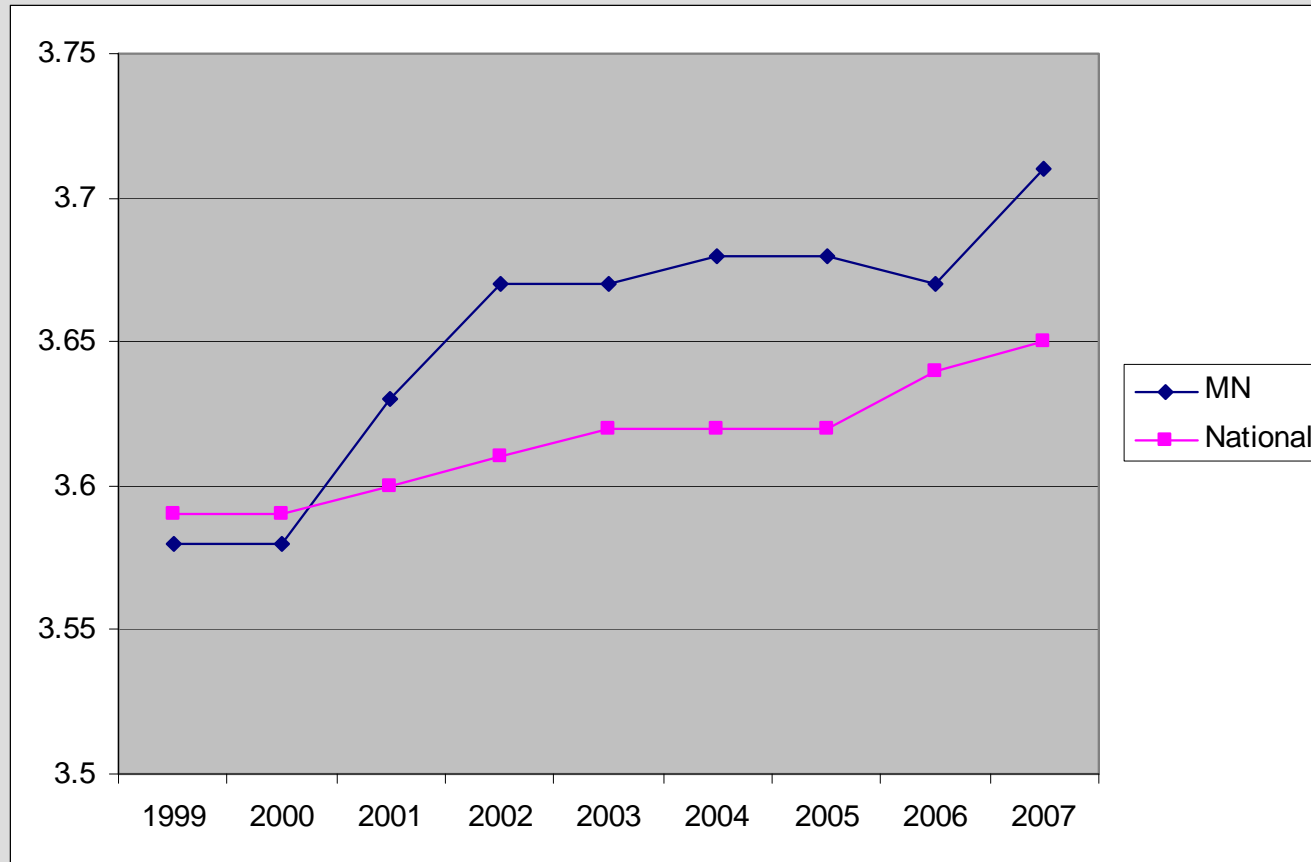
2007 Entering Class Profile

Applicants		3093
Interviewed		508
	(includes MD/PhD applicants)	
Entering Students		183
	[175 MD , 8 MD/PhD]	
Residency Status		
	Minnesota Residents [82 %]	150
	Non-Residents [18 %]	33
Gender		
	Women	92
	Men	91
Multicultural	[22%]	41
	UIM [10%]	17
Average GPA		3.71
Average MCAT		32
Advanced Degrees	[10.38%]	19

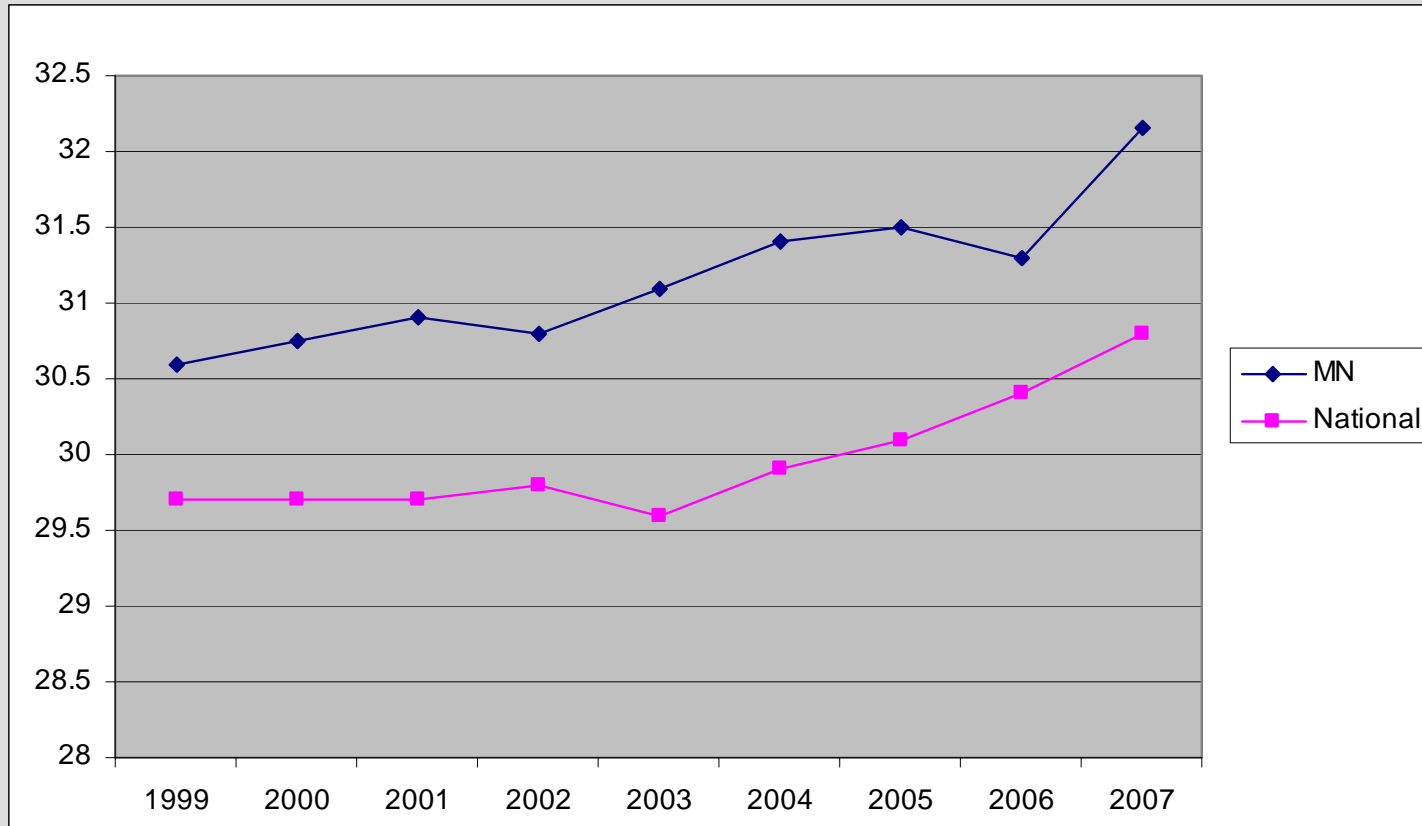
Medical School Applicants

Year	National Statistics		U of M - TC Statistics	
	Applicant Pool	% Change	Applicant Pool	% Change
2000	37,088	-3.5%	1696	-9.5%
2001	34,860	-6%	1654	-2.5%
2002	33,625	-3.5%	1645	-0.5%
2003	34,791	+3.5%	1987	+20.8%
2004	35,735	+2.7%	2166	+9%
2005	37,373	+4.6%	2285	+5.5%
2006	39,108	+4.6%	2528	+10.6%
2007	42,315	+8.2%	3093	+22.3%

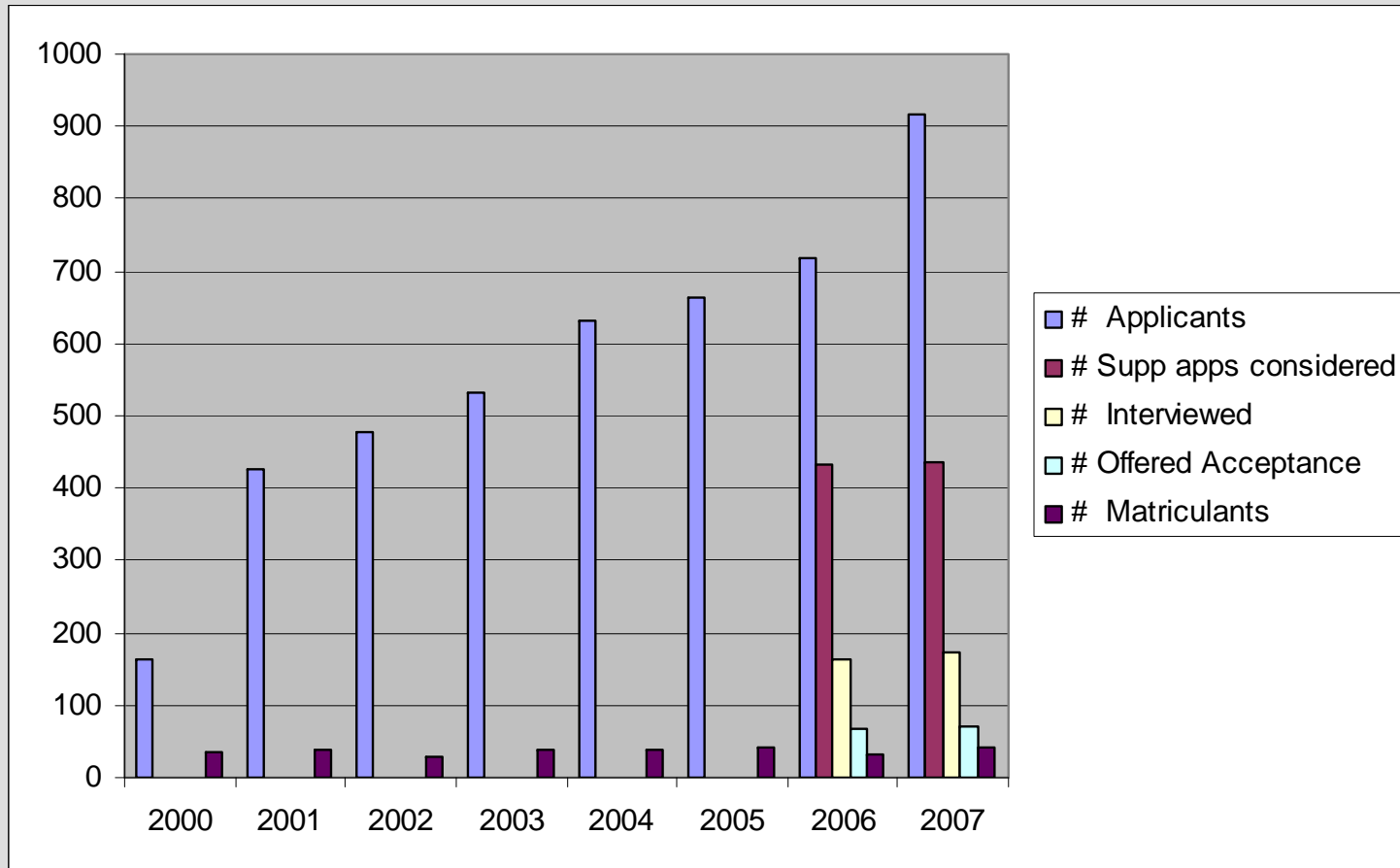
Medical School Matriculants Mean GPA's



Medical School Matriculants Mean MCAT Scores



Multicultural Applicants



Primary Undergraduate Feeder Schools

Feeder Schools	2000	2001	2002	2003	2004	2005	2006	2007	Total Entrants 2000-2007
University of Minnesota-TC	30	28	33	27	44	36	29	47	274
Saint Olaf	11	6	11	6	11	6	4	7	62
University of Wisconsin - Madison	7	5	9	9	9	9	7	5	60
Carleton	11	6	9	5	7	5	4	6	53
University of St. Thomas	8	6	4	5	8	6	3	9	49
Gustavus Adolphus	6	3	2	8	1	4	5	4	33
Macalester	2	6	6	2	4	3	6	4	33
Northwestern University	4	3	1	4	4	2	6	5	29
University of Notre Dame	4	2	5	4	4	2	1	4	26
Saint Johns University	3	3	3	3	3	3	1	5	24

Concluding Remarks

- Quality of applicants continues to improve
- Anticipate and plan for increased applicant pool for 2008-2009 [number, competitiveness]
- Continue practice of comprehensive holistic review of applicants.
- Continue to active recruit for a diverse student body.
- Applicants for 2008-2009 will be considered based on the new requirements
- Continue to monitor and modify the applicant review process as needed
- Collaborate with Minnesota Medical Foundation on a major campaign to increase scholarship funds

Essential and Desired Qualities of the Ideal Medical Student

The Dean's Task Force on Admissions was commissioned on January 31, 2007, by Dean Powell and Associate Dean Watson. The task force was asked to recommend those characteristics and qualifications that should be required for all University of Minnesota medical students, and those that should be considered desirable.

A new approach to admissions:

We are looking toward the future of medicine and the skills and knowledge our future physicians will need therefore, we are changing our focus in recruiting students.

Applicants to the University of Minnesota Medical School must demonstrate commitment to delivering compassionate and quality care, as well as a high degree of personal integrity and skill in communicating with diverse groups. They should be self-directed individuals who are committed to lifelong learning.

The new prerequisites are designed to attract a pool of applicants who best reflect our society, while maintaining high standards for intellectual aptitude, which includes performing well on the MCAT.

These new qualifications will be subject to regular review and, if necessary, revision.

The essential and desired qualities are:

1. Commitment to Improving the Human Condition. Qualities that fall under this heading are:

- **Commitment to Human Service (essential).** Sustained and meaningful commitment could be demonstrated by—but not be limited to—volunteer, work, or academic experiences (such as research) that reflect a desire to improve the human condition.
- **Understanding of Medicine (essential).** Each applicant must have a basic understanding of the world of medicine and the life of a physician.
- **Commitment to Care of the Underserved (desired).**
- **Commitment to Community and Global Care (desired).** Individual applicants who demonstrate these commitments would align well with our Medical School's orientation.
- **Commitment to Rural Care (desired in Twin City applicants, essential in Duluth applicants).** While desirable among all our students, clearly this is an essential quality for the ideal Duluth campus student.

2. Professional Conduct. Qualities that fall under this heading are:

- **Honesty (essential).** Honesty and integrity, particularly regarding instances of personal failings or mistakes, are essential for accountability. Previous educational institutions, employers, and relationships may help the applicant demonstrate honesty and integrity.
- **Compassion (essential).** Evidence for this essential quality could be provided by faculty, advisor, and supervisor evaluations, the nature of prior employment (e.g., nurse's aide, working for the underserved), or experience as a counselor or in other roles that require compassion.

- **Self-awareness (essential).** Students can exhibit self-assessment and self-reflection by, among other possibilities, citing their own strengths and weaknesses; knowing when to ask for help; or recounting experiences in which they were in error, in the minority, or out of their comfort zones.
- **Ethical Behavior (essential).** Our medical students must understand, value, and embody moral standards and conduct.

3. Outstanding Interpersonal Skills. Qualities that fall under this heading are:

- **Communication Skills (essential).** To best serve patients and work with peers, oral and written communication skills must be excellent, both to share knowledge and to convey empathy.
- **Teamwork Skills (essential).** Working effectively in teams requires: acknowledging other team members' expertise, accurate self-assessment of one's skills, assumption of leadership when appropriate, and subsuming one's own interests to the work of the team.
- **Tolerance (essential).** Reflecting the ever-increasing diversity of patients and providers, students should exhibit respect and tolerance of values and belief systems other than their own.
- **Leadership Experiences (desired).**
- **Diversity Experiences (desired).** Some applicants will have limited opportunity to engage in diversity experiences and should not be excluded from admission solely on this basis.

4. Effective Dedication to Lifelong Learning. Qualities that fall under this heading are:

- **Intellectual Curiosity (essential).** Intellectual curiosity may be demonstrated by academic achievement across a broad variety of disciplines, a history of unique or intensive learning experiences or teaching experiences, ability to discuss a wide array of topics, or through other means, such as publications and research.
- **Scientific Aptitude (essential).** Students should demonstrate they can learn and apply scientific concepts and a fundamental appreciation of how the scientific method is applied to the discovery of medical knowledge and to medical practice.
- **Potential for Academic Success (essential).** Applicants must demonstrate the motivation, intellectual ability, time management skills, and other qualities necessary for success in medical education.
- **Psychological Resilience (essential).** Emotional stability, skills to cope with stress, an ability to deal with sacrifice and hardship, maturity, good judgment, and an ability to defer gratification are components of resilience needed in medical students.
- **Creativity (desired).**
- **Research Experiences (desired; essential in MD/PhD applicants).**

Admissions Committee, 2007-2008

Jasjit Ahluwalia, MD, MPH, MS, Medicine
Walter Bailey, MD, Ramsey Medical Society
G. Eric Bauer, PhD, Genetics, Cell Biology and Development
Kumar Belani, MD, Anesthesiology
Joseph Brocato, PhD, Family Medicine and Community Health
Khalaf Bushara, MD, Neurology
Kent Crossley, MD, Medicine *
David Current, MD, Family Medicine
Lenore Everson, MD, Radiology
William Gamble, MD, Surgery
Ken Guidera, MD, Orthopedic Surgery
David Hamlar, MD, DDS, Otolaryngology
A. Stuart Hanson, MD, Hennepin Medical Society
Gerald Hill, MD, Association of American Indian Physicians
David Johnston, MD, MN Medical Association
Sanjiv Kumra, MD, Psychiatry
Barbara Leone, MD, Family Medicine and Community Health
David Levitt, PhD, Physiology
Ji-Chia Liao, MD, Anesthesiology
Steven Miles, MD, Medicine/Bioethics
Heather Nelson, MD, Class of 2008
Arthur L. Ney, MD, Surgery
William D. Payne, MD, Surgery
Claus Pierach, MD, Medicine/History of Medicine
Gerald Rosen, MD, Pediatrics
Leon Satran, MD, Pediatrics *
Christopher Vu, MD, Class of 2008
Karen Wahmanholm, MD, PhD, Psychiatry

*Co-Chairs

Ex-Officio Members

Paul T. White, JD, Assistant Dean of Admissions
Joy Dorscher, MD, Director, Center of American Indian and Minority Health
Mary Tate, Director, Office of Minority Affairs and Diversity
Tucker LeBien, PhD, Director, Combined MD/PhD Program

Top U of M Competitors

Medical Schools Attended by Applicants Also Accepted to UMMS-TC

	2002		2003		2004		2005		2006		2007	
	Medical School	# of WDs	Medical School	# of WDs	Medical School	# of WDs	Medical School	# of WDs	Medical School	# of WDs	Medical School	# of WDs
1	Mayo	13	Mayo	11	U Wisconsin	7	Mayo	6	Mayo	9	Wash. Univ. St. Louis	7
2	Minnesota-Duluth	8	U Wisconsin	8	Mayo	7	U Wisconsin	5	Wisconsin	7	Mayo	7
3	U Wisconsin	5	U Wash-Seattle	7	Iowa	7	U Chicago-Pritzker	5	U Michigan	7	Univ. Washington-Seattle	5
4	U Wash-Seattle	5	Harvard	7	Wash U St. Louis	6	Iowa	4	Iowa	5	Northwestern	5
5	Northwestern	5	Minnesota-Duluth	5	Minnesota-Duluth	6	Dartmouth	4	UMN-Duluth	4	U Michigan	5
6	Iowa	5	U Michigan	4	Southern Calif	5	Case Western	4	Pittsburgh	4	Chicago-Pritzker	5
7	Colorado	5	Rochester	4	Northwestern	4	Oregon	3	Johns Hopkins	4	UCSF	4
8	Wash U St Louis	4	Med Col Wisconsin	4	Med College of Wisconsin	4	Calif-San Diego	3	Case Western	4	Case Western	4
9	Un. Calif.-San Fran.	4	Johns Hopkins	4	Johns Hopkins	4	Georgetown	2	Loyola-Stritch	3	Iowa	3
10	U Chicago-Pritzker	4	Colorado	4	Harvard	4	Emory	2	Cornell	3	Illinois	3
11	Harvard	4	U. Calif.-San Fran.	3	Georgetown	3	Cornell U	2	Baylor	3	Georgetown	3
12	Emory	3	U Chicago-Pritzker	3	Rochester	3	Harvard	2	Northwestern	3	Wisconsin	3
13	Albert Einstein	2	Southern Calif	3	Stanford	3	Johns Hopkins	2	Yale	3	Dartmouth	2
14	Case Western Res	2	Pittsburgh	3	U Michigan	3	Med Col Wisconsin	2	Colorado	2	Emory	2
15	Columbia	2	Iowa	3	Arizona	2	Minnesota-Duluth	2	Columbia	2	Med College of Wisc.	2
16	Dartmouth	2	Creighton	3	Calif-Los Angeles	2	Ohio State	2	Dartmouth	2	Ohio State	2
17	Georgetown	2	Wash U St Louis	2	Emory	2	Pittsburgh	2	Harvard	2	Oregon	2
18	Loyola-Stritch	2	Vanderbilt	2	Loma Linda	2	Rochester	2	Illinois	2	Pittsburgh	2
19	Oregon	2	U Illinois	2	Albert Einstein	1	Stanford	2	Ohio State	2	UCSD	2
20	Penn State	2	Stanford	2	Case Western	1	U Michigan	2	Oregon	2	UMN-Duluth	2

May 15, 2008

TO: University of Minnesota Medical School Faculty Assembly

FROM: Scholastic Standing Committee, Duluth

RE: Annual Report (2007-2008)

The Scholastic Standing Committee is a standing committee in Duluth charged with the responsibility of monitoring student progress through the first two years of medical school. In Duluth, each department of the School has one member on the committee as does each class of medical students. The Duluth campus Associate Dean for Student Affairs sits ex-officio on this committee. Meetings are held following the conclusion of each grading period to review student progress. Student progress is also monitored at each mid-semester point and meetings are held at these times if necessary.

End of grading period determinations were held on 5/29/07, 7/17/07 and 1/29/08. The Spring Semester 2008 end of grading period determination meeting is scheduled for 5/27/08. In addition, a special dismissal hearing was held on 6/6/07 regarding the academic performance of a first year student. A special meeting was held on 7/3/07 regarding the academic progress of a first year student who had failed 1st Year courses in Spring Semester 2007 and a second special meeting was held on 7/25/07 regarding the academic progress of this same first year student. A special meeting was held on 12/3/07 regarding a second year student who had failed two second year courses, but had not yet taken re-examinations in these courses.

Significant actions of the committee during this academic year were:

1. Program modifications:

To date, no modified programs have been granted for the 2007-2008 academic year.

2. Leave of Absence and/or Readmission after a leave:

One first year student, following special meetings of the SSC on 7/3/07 and 7/25/07, was granted a leave of absence due to personal and family issues. This student petitioned to resume course work in Spring 2008. This student was interviewed by Drs. Hoffman, Davis, and Repesh on 11/28/07 and the student's petition was denied and the leave extended to the 2008-2009 academic year due to unresolved family and personal issues.

Another first year student was granted a leave of absence due to personal issues.

One second year student was granted a leave of absence due to personal issues.

3. Academic Probation/Remedial Programs/Re-examinations:

- a. One 2nd Year student was on academic probation after failing the Cardiovascular System Course in 2007. This student successfully completed a re-examination in this course in Spring 2008 to satisfy those course requirements. A re-examination in the Respiratory System Course is pending. This student has passed all other second year courses.
- b. One 1st Year student is on academic probation after failing the Histopathology Course in Spring Semester 2008.

4. Dismissals/Withdrawals:

One first year student withdrew in Fall semester 2007 following a special dismissal hearing on 6/6/07.

One second year student withdrew in Fall semester 2007.

5. Successful Completion of USMLE, Step 1:

Second year students from the 2007-2008 academic year are currently in the process of taking the USMLE, Step 1. Results of those students who have thus far taken the exam are not yet available. Ninety-four percent of 2nd year students passed the USMLE, Step 1 on their first attempt in **2007**. That class achieved an average score of 218. Two students passed on the second attempt. One has not yet completed the second attempt.

6. Transfers to other medical schools

None

Two recommendations are made to the Assembly at this time.* They are:

1. All second year students who have successfully completed all course requirements for the first and second years of the curriculum and Step 1 of the USMLE are recommended for transfer.
2. All first year students who successfully complete all course requirements for the first year curriculum are recommended for promotion to the second year.

*Note that all students who are not currently in good standing for promotion or transfer will be promoted only upon successful completion of the necessary requirements.

This report is respectfully submitted for acceptance by the Medical School Faculty Assembly.

Richard Hoffman, Ph.D.
Chair
Duluth Scholastic Standing Committee

U of Minnesota Medical School Duluth Scholastic Standing Committee Member Roster, 2007-2008

Arthur Aufderheide, M.D.
Benjamin Clarke, Ph.D.
Robert Cormier, Ph.D.
Steve Downing, Ph.D.
Lois Heller, Ph.D.
Richard Hoffman, Ph.D. (Chair)
Lillian Repesh, Ph.D. (Ex-Officio)
George Trachte, Ph.D.
Ruth Westra, D.O.
Christina Bogan (second year student)
Neil Brummond (first year student)

**Committee on Student Scholastic Standing Report to the Executive Faculty of the
University of Minnesota Medical School
May 2008**

Members serving on the Committee from 5/1/07 through 4/30/08:

Sitting Members:

Michael Mauer, M.D., Chair
Peter Argenta, M.D.
Colin Campbell, Ph.D.
William Engeland, Ph.D.
Stanley Finklestein, Ph.D.
Christopher Honda, Ph.D.
Jose Jessurun, M.D.
Ryoko Kuriyama, Ph.D.
Catherine Niewoehner, M.D.
David Power, M.D.
William Robiner, Ph.D.
Steven Schmechel, M.D.
Sheila Specker, M.D.
Nancy Thorvilson, M.D.
Jo Ann Wood, M.D.

Ex-Officio Members:

Helene Horwitz, Ph.D.
Theodore Thompson, M.D.

Student Representatives:

Warren Manyara, MS4 – through 11/21/07
Theodora Nemeth, MS3

General Counsel:

Barbara Shiels, J.D.

Meetings/Hours:

From May 1, 2007 through April 30, 2008, the Committee on Student Scholastic Standing held 10 meetings, totaling approximately 25.25 hours. Among a total of 829 students enrolled in medical school on the Twin Cities campus, the Committee addressed the following:

Students Reviewed:

84 Individual medical students were discussed at those meetings

Student Interviews:

20 Student interviews were conducted to discuss academic issues or hearings:
13 Student interviews were conducted to discuss course failures
3 Student interviews were conducted for failing to make satisfactory academic progress

Hearings for Dismissal:

4 Students appeared for Dismissal hearings.
2 Students were dismissed from medical school.
1 Student's dismissal was rescinded on appeal.

“At Risk” Status:

34 Students were placed on “At Risk” status because of course/rotation failures, Step 1 and Step 2 failures:
21 Students were placed on “At Risk” status for basic science course failures
8 Students were placed on “At Risk” status for clinical rotation failures
3 Students were placed on “At Risk” status for Step 1 failures
4 Students were placed on “At Risk” status for Step 2 CK failures
1 Student was placed on “At Risk” status for Step 2 CS failure

Academic “Probation” Status:

4 Students were placed on “Probation.”
2 Students were placed on “Probation” for basic science course failures
2 Students were placed on “Probation” for clinical rotation failures

**Committee on Student Scholastic Standing
Report to the Executive Faculty
University of Minnesota Medical School
May 2008**

Leaves of Absence:

9 Students were granted a leave of absence (LOA).

6 LOAs were granted for a one-year period;
3 were extensions of a previous LOA

The following is a breakdown of the reasons a leave was granted:

3 MPH
2 Research
1 Other Educational Pursuit
1 Personal
2 Medical

19 Students were reinstated to medical school after a leave of absence

Delays of Graduation:

19 Students were granted permission to delay graduation to pursue additional educational and international enrichment activities

Decelerated Schedule:

2 Students were granted permission to decelerate Year 2

USMLE:

10 Students were reviewed for USMLE issues:

5 Students were reviewed for not taking the Step 1 exam
3 Students failed the Step 1
4 Students failed Step 2 CK
1 Students failed Step 2 CS

USMLE Statistics

USMLE Step 1 Statistics (includes Duluth students):

Dates	Total Tested	Number of Attempts				
		1 st	2 nd	3 rd	4 th	5 th
05/01/07 – 04/30/08	204	197 Passed 7 Failed	4 Passed 1 Failed	1 Passed	--	--

USMLE Step 2 CK Statistics (includes Duluth students):

Dates	Total Tested	Number of Attempts				
		1 st	2 nd	3 rd	4 th	5 th
05/01/07 – 04/30/08	213	199 Passed 4 Failed	2 Passed; 1 Pending	--	--	--

USMLE Step 2 CS Statistics (includes Duluth students):

Dates	Total Tested	Number of Attempts				
		1 st	2 nd	3 rd	4 th	5 th
05/01/07 – 04/30/08	206	205 Passed; 1 Pending 2 Failed	1 Pending	--	--	--

NBME reports indicate that, among first time test takers, our students are performing above the national mean on Step 1, Step 2CK and above the national pass rates on Step 1, Step 2CK and Step 2 CS. The 2007 NBME reports listed pass rates of 98% for Step 1, 99% for Step 2CK and 99% for Step 2 CS.